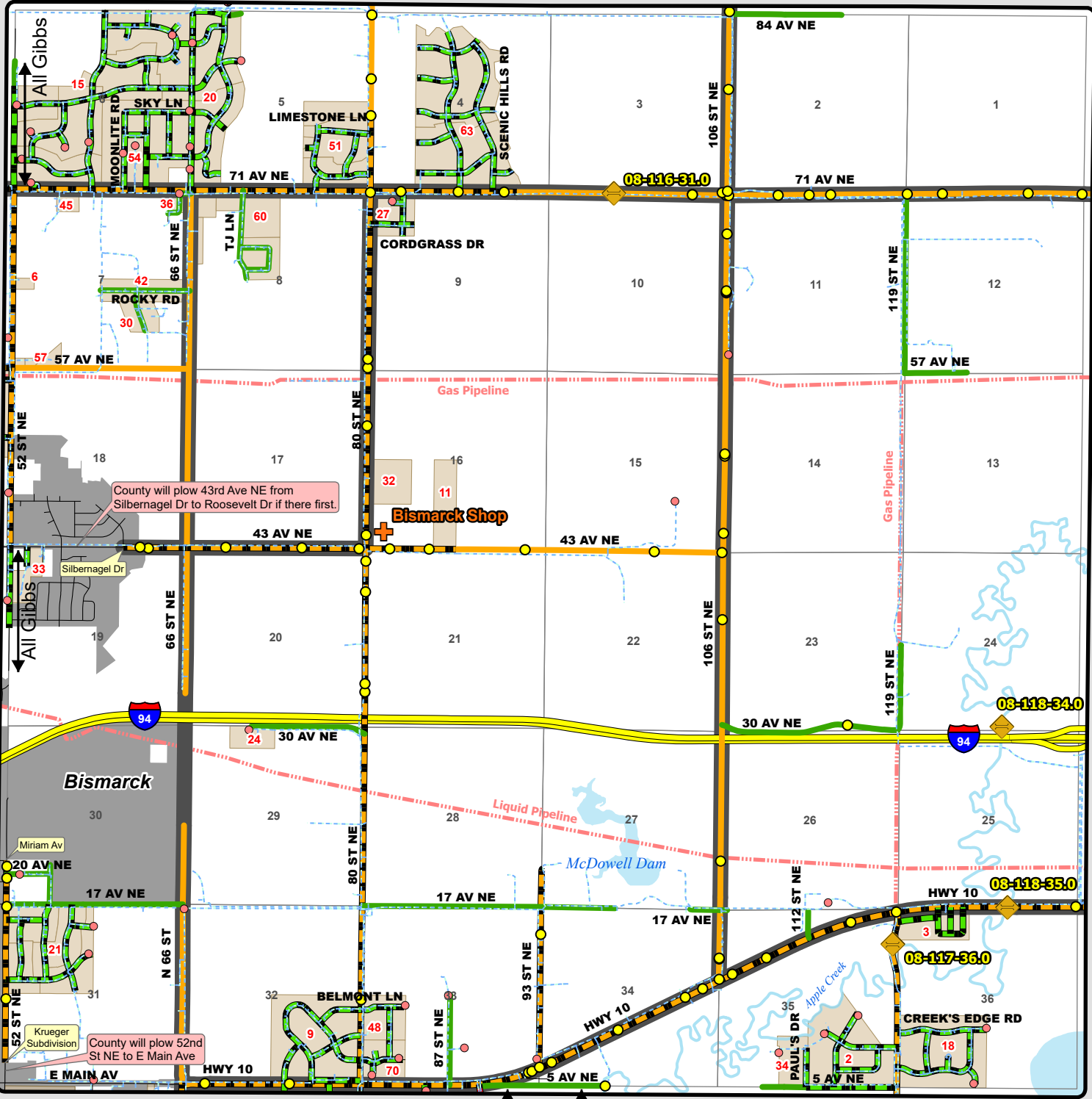


TOWNSHIP ROAD MAINTENANCE MAP GIBBS #32 (T139N R79W)

NAUGHTON TOWNSHIP



County will plow 43rd Ave NE from Silbernagel Dr to Roosevelt Dr if there first.

County will plow 52nd St NE to E Main Ave

0.11mi Apple Creek 0.58mi Gibbs

- Culvert
- Fire Hydrants & Cleanouts
- County Gravel Road
- County Paved Road
- Gravel - Summer Maintenance
- Gravel - Winter Maintenance
- Gravel - Year Round Maintenance
- Paved - Winter Maintenance
- Paved - Summer Maintenance
- Paved - Year Round Maintenance
- Township/County Jurisdiction
- State & Federal Highways
- Federal Aid Road
- Other Roads
- Bridge
- Water Pipe

GIBBS SUBDIVISIONS

CODE	NAME	SECTION
2	APPLE CREEK RIDGE SUBDIVISION	35
3	APPLE VALLEY SUBDIVISION	36
6	BISCHOFF ACRES	7
9	BROOKFIELD ESTATES	32
11	CENTRAL OUTPOST SUBDIVISION	16
15	COUNTRY CREEK SUBDIVISION	6
15	COUNTRY CREEK 2ND SUBDIVISION	6
15	COUNTRY CREEK 3RD SUBDIVISION	6
15	COUNTRY CREEK 4TH SUBDIVISION	6
15	COUNTRY CREEK 5TH SUBDIVISION	6
18	COUNTRY MEADOWS SUBDIVISION	36
20	COUNTRY RIDGE 1ST SUBDIVISION	5
20	COUNTRY RIDGE 2ND SUBDIVISION	5
21	COUNTRYSIDE ESTATES SUBDIVISION	31
21	COUNTRYSIDE ESTATES 2ND SUBDIVISION	31
21	COUNTRYSIDE ESTATES 3RD SUBDIVISION	31
21	COUNTRYSIDE ESTATES 4TH SUBDIVISION	31
21	COUNTRYSIDE ESTATES 5TH SUBDIVISION	31
24	DAUENHAUER ADDITION	29
27	EAST MEADOWS ESTATES	9
30	FOREST PARK 1ST SUBDIVISION	7
32	GEORGE SUBDIVISION	16
33	HUBER SUBDIVISION	19
34	JASKOWIAK SUBDIVISION	35
36	JRJ ADDITION	7
42	NORTH FORTY ESTATES REPLAT	7
45	PAPACHEKS SUBDIVISION	7
48	RAINBOW ACRES	33
51	ROCK CREEK 1ST SUBDIVISION	5
51	ROCK CREEK 2ND SUBDIVISION	5
51	ROCK CREEK 3RD SUBDIVISION	5
51	ROCK CREEK 4TH SUBDIVISION	5
54	SKYLINE ESTATES	6
57	TRIANGLE SQUARE SUBDIVISION	7
57	TRIANGLE SQUARE 2ND SUBDIVISION	7
60	TJ RANCH ESTATES	8
60	TJ RANCH ESTATES 2ND ADDITION	8
60	TJ RANCH ESTATES REPLAT L1&2 B1	8
60	TJ RANCH ESTATES REPLAT L6&7 B2	8
63	COUNTRY HILLS SUBDIVISION	4
63	COUNTRY HILLS 2ND SUBDIVISION	4
70	WILLOW VIEW ESTATES	33